

13TH SWISS NATIONAL CONGRESS OF SPELEOLOGY

www.speleodiversity.ch



Muotathal, Swiss
29.9. - 1.10.2012



13th National Congress of Speleology – EuroSpeleo-Forum 29.9. till 1.10.2012 – Muotathal, Switzerland

There is neither „a speleology“ nor „a caver“ but a diversity of specialist areas and interests within caving and cave research.

The 13th National Congress of Speleology focuses on this variety and offers everyone dealing with the fantastic underground world a reasonably priced platform for mutual exchange.

In the name of the **Swiss Society of Speleology (SSS)** the following speleo clubs are working together in the organising committee:

- Arbeitsgemeinschaft für Speläologie Regensdorf (AGSR)
- Arbeitsgemeinschaft Höllochforschung (AGH)
- Höhlengruppe Muotathal (HGM)

Supported by the Commission for Scientific Speleology (SSS and SCNAT).

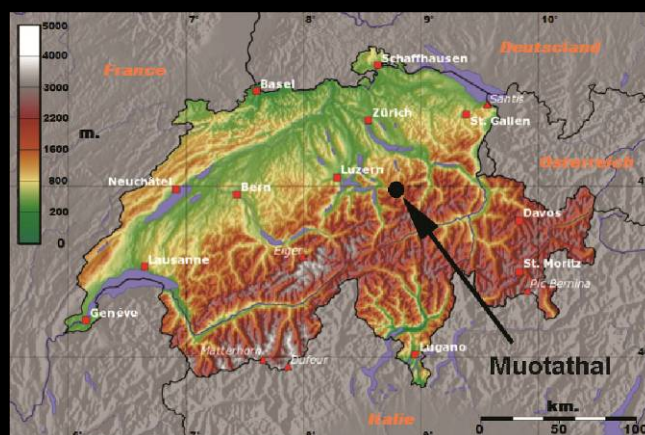
The association „Speleodiversity 2012“ was founded for the organisation of this congress. We are looking forward for numerous participants heading to Muotathal (SZ).

Location

As central venue for the national congress serves the school building „Schulhaus Stumpenmatt“ in Muotathal, which can be easily reached also by public transport. The village offers a sufficient number of places in dormitories, campgrounds and also hotels. The premises have an outstanding infrastructure with a main auditorium, refectory, and a sufficient number of class rooms for lectures, workshops and film shows. In addition we have a multipurpose hall and a cinema for multimedia projections at our disposal.

An area of more than 160m² is at the disposal of vendors, part of it can be locked.

Breakfast and Gala dinner can be served in the refectory and in the assembly hall. And snacks will be available during the whole congress.





Registration and important dates

Registration for congress participants, sales stalls, multimedia presentations or referees will be gladly received at www.speleodiversity.ch.

Important dates for participants

31.01.2012 deadline for registration at early booker fee

31.08.2012 last registration at the premium fee

Important dates for referees

31.01.2012 deadline for title and summary for oral or poster presentations

01.04.2012 deadline for submission of the full papers to be published in the congress proceedings

01.06.2012 return of the papers with the comments of the editors

01.07.2012 deadline for filing of the final version of the papers

Important dates for meetings and workshops (pre-congress)

01.11.2011 delivery of letter of intent

15.02.2012 Definitive registration (number of persons, time, infrastructure needed)

Lecture Sessions

Three internationally renowned cave scientists have agreed to present plenary lectures. All presentations are collected and published in the congress proceedings.

During 2-3 days presentations will cover the following topics:

- Speleology in Switzerland
- Speleology abroad
- Cave genesis
- Karst and engineering
- Cave biology
- Cave climatology
- Karst hydrology
- Palaeontology
- Archaeology / historical underground mining
- Caving techniques and IT technology in caving
- Open topics

Pre-Congress

We intend to offer activities already on Friday September 28, 2012:

- Scientific Workshops with lectures and exchange of ideas
- Technical Workshops
- Meetings of commissions

We intend to organize a workshop on cave climatology.

We will reserve a meeting room. Dormitories will be open. There will be no organized meals during the Pre-Congress.



International aspects

The 13th national congress will host meetings of various international organisations. We are pleased to tighten our international contacts:

- EuroSpeleo Forum: Meeting of the European Federation of Speleology (FSE)
- EuroSpeleo Protection: Meeting of the European Cave Protection Commission (ECPC)
- UIS: „International Union of Speleology“

Multimedia

3D Photo show

A fascinating 3D photo show awaits you with exclusive pictures from Swiss caves. The show is presented by the international photo group "LaSalle".

Cave photography

We offer a platform for cave photographers where they can present their pictures and participate in a competition.

Cave films

The cinema Muotathal will be at our disposal. We present exclusive film footage and your films.

Cave art

We offer artists the possibility to present their works of art on the subject "cave".

If you have contributions for the topics cave photography, - film and arts, please contact us by March 1st 2012 at the latest at multimedia@speleodiversity.ch.

Sales stalls

There is plenty of space at your disposal for sales stalls and information booths. Due to the various activities of the FSE and the UIS we also expect a number of vendors from abroad.

We are looking forward for your registration at www.speleodiversity.ch.
(20 Swiss Francs/running meter).

Excursions

On the last day of the congress you have the possibility to participate in cave excursions or surface walks in the karst area of the Muotatal.

Some of the caves are subjected to occasional flooding; therefore the weather conditions will decide if an activity can take place. The number of participants is limited. In case of great demand some excursions may be offered more than once.

Beside the officially proposed excursions the karst of the Muotatal offers a variety of individual walks and treks. More information about further possibilities for excursions, e.g. via ferrata or canyoning tours (caution: danger due to hydro electric power stations) will be available during the congress.



The participant is responsible for insurance coverage for all excursions.

Transportation for participants will be available by mini bus or by private cars. Cost of local transportation is included in the congress fees.

Hölloch – excursions 1-3

Hölloch is a giant cave system with different levels. Currently the cave is about 197 km long with a difference in elevation of 939 m.



Literature for excursion 2 and 3:

Hölloch Nachrichten 1 ÷ 10 (1967, 1968, 1973, 1981, 1982, 1986 = Stalactite 36/1, 1990, 1995 = Stalactite 45/2, 1999, 2007= Stalactite 57/1).

Excursion 1 - HÖLLOCH *

Entrance 2 to entrance 1

Characteristic

Pitches, steep slopes and \pm horizontal parts and in the high system also low passages; difference in elevation between entrance 2 (high system) and entrance 1 (main system) about 600 m; in the high system partly dripstone formations and wet, main system mostly dry

Equipment

Equipment for \pm dry vertical- and horizontal caves.

Approx. duration walk to the cave / cave tour / walk back

1 h / 6 h / 0.5 h

Maximum number of participants (plus guides)

8 persons

Excursion 2 - HÖLLOCH *

Main system - entrance 1 - Himmelsgang (celestial passage) - bivouac 1

Characteristic

Constant up and down in inclined, partly low passages, technically easy. In some parts dripstones.

Equipment

Equipment for \pm dry horizontal caves

Approx. duration walk to the cave / cave tour / walk back

0.5 h / 8 h / 0.5 h

Maximum number of participants (plus guides)

8 persons

Remarks

Private cars, bring your own food.



Excursion 3 - HÖLLOCH [*]

Lower passages

Characteristic

Steep, easy climbable and \pm horizontal passages near entrance 1; difference in elevation in the area of the excursion approx. 100 m. Few dripstones, descent to karst water level

Equipment

Equipment for \pm dry horizontal caves

Approx. duration walk to the cave / cave tour / walk back

0.5 h / 3 h / 0.5 h

Maximum number of participants (plus guides)

10 persons

Remarks

Private cars.

Possible also for children. Excursion will perhaps be guided twice.

Excursion 4 - SCHWYZER SCHACHT [*]

Valley of the thousand rocks



Schwyz Schacht - mainly developed at the basis of "Schrattenkalk" - is part of the Silberer System (38 km long, 888 m difference in elevation).

Literature

Stalactite 45/2

Characteristic

Descent and ascent through a series of pitches to approx. - 200 m; visit of a big blocked hall with 200 m length and each 40 m wide and high.

Equipment

Equipment for alpine vertical caves.

Approx. duration walk to the cave / cave tour / walk back

1.5 h / 6 h / 1 h

Maximum number of participants (plus guides)

8 persons

Remarks

Transport with minibus, bring your own food.



Excursion 5 - BÖLLENHÖHLE *

Traverse from the middle entrance to the lower entrance



© Fraili Auf der Maur

The Böllenhöhle at Hürital is a cave system with a length of 2,2 km and a difference in elevation of 312 m that was mostly built at the basis of Schrätkalk.

Literature

Stalactite 57/1

Characteristic

Descent through meanders and steep slopes from the middle to the lower entrance (difference in elevation of approx. 300 m).

Equipment

Equipment for alpine vertical caves.

Approx. duration walk to the cave / cave tour / walk back

1.5 h / 4 h / 1 h

Maximum number of participants (plus guides)

6 persons

Remarks

Transport with minibus, bring your own food.

Excursion 6 - KARST TREK BÖMEREN



© Michel Monbaron

Covered karst with transition to open karst; geology and morphology; medieval and prehistoric alp utilization.

Literature

Carsologica 9 (2009); Mitt. hist. Verein Schwyz, 100 (2008)

Characteristic

Hike along and beside footpaths (covered karst and karren).

Equipment

Hiking equipment incl. rain cover.

Approx. duration journey / hike / return journey

0.5 h / 4 h / 0.5 h

Maximum number of participants (plus guides)

16 persons

Remarks

Transport with private cars, bring your own food.



Exkursion 7 - BRANDLOCH *

Traverse from entrance 2 to entrance 1



Brandloch is an active river cave with 2 entrances: at the top entrance pitch and below resurgence (length 2.2 km, depth 178 m).

Literature

Stalactite 31/2 - 32/1

Characteristic

Descent through a 110 m-pitch (with free belay) to the river, which flows to entrance 1 via three tight siphons (length 10 m / 5 m / 110 m, depth max. 3 m) .

Equipment

Diving equipment (2 x 4 L, side-mount, neoprene 5-7 mm, coverall) and vertical equipment.

Approx. duration walk to the cave / cave tour / walk back

0.5 h / 6 h / 1 h

Maximum number of participants (plus guides)

4 persons

Remarks

Transport with private cars.

Depending on weather or participants the dive excursion can be eventually moved to another cave siphon at Muotatal.

Excursion 8 - BAWANGLI-HÖHLE

Entrance 2 - river passage - hall



Stratigraphic boundary cave in tertiary limestone and Upper Cretaceous-Marl-Limestone (length 1.5 km, difference in elevation 95 m).

Literature

Stalactite 56/2

Characteristic

River cave with descent to a big blocked hall.

Equipment

Equipment for horizontal caves

Approx. duration journey / cave tour / return journey

1 - 2 h / 2.5 h / 1 - 2 h

Maximum number of participants (plus guides)

12 persons

Remarks

Transport with minibus. Excursion can be guided twice if required.



Excursion 9 - DRECKIGES PARADIES [*]

River passage



© Thomas Schilter

River cave at the basis of Schrattekalks north of Illgau (length 5.2 km, difference in elevation 274 m).

Literature

Akten 10. nationaler Kongress (1995)

Characteristic

Cave tour in canyon with lots of dripstones, river and small lakes.

Equipment

Equipment for horizontal caves (Pontonnière facultative, seat harness for safeguarding at a short descent in the entrance zone).

Approx. duration journey / cave tour / return journey

1 h / 4 h / 1 h

Maximum number of participants (plus guides)

8 persons

Remarks

Transport with private cars, bring your own food.

Excursion 10 - BRANDLOCH *

River passage



© Peter Reichmuth

Brandloch is an aktive water cave with 2 entrances. The lower entrance is the resurgence of the system (length 2.2 km, depth 178 m).

Literature

Stalactite 31/2 - 32/1

Characteristic

After a short exposed ascent to the resurgence we follow a fissure meander with a river to the siphon.

Equipment

Diving suit or pontonnière, seat harness with safeguarding material for the entrance zone.

Approx. duration walk to the cave / cave tour / walk back

1 h / 4 h / 1 h

Maximum number of participants (plus guides)

6 persons

Remarks

Transport with private cars, own food.



Exkursion 11 - ICE CAVE C3

Biggest Ice Cave at Central Switzerland



Underground "glacier" with 60 - 80 m length (difference in elevation 206 m, depth 42 m).

Literature

Akten 8. nationaler Kongress (1987)

Characteristic

Large-scale slightly descending cave passage with a big ice volume.

Equipment

Horizontal caves + seat harness, material for rope securing, crampon and ice axe

Approx. duration walk to the cave / cave tour / walk back

2 h / 2 h / 1.5 h

Maximum number of participants (plus guides)

10 persons

Remarks

Transport with private cars, bring your own food.

* flooding is frequent

[*] flooding is less frequent